

Planning Away Private Property Rights, Part 2 “Natural Resources”

Skepticism is the first step to Truth – D. Diderot

Albemarle County BOS

November 14, 2012

presentation

by

Charles Battig, MD

VA-Scientists and Engineers for Energy and
Environment

Soviet-Style Edicts From The Planning Staff For The Rural Areas Ignore Private Property Rights And Free-Market Dynamics

“An Agricultural-Forestal Support Program **will exist** and a staff person **will be hired**.

The number of farms **will not** decrease.

The number of acreage in farmland **will not** decrease.

The number of acres within agricultural and forestal districts **will not decrease**.

The number of acres under land use taxation **will remain stable** or increase.

The **total market value** of agricultural products produced in the County **will increase**.

The number of RPDs which have preserved important soils for agricultural and forestry use **will increase**.”

(October 30, 2012 Planning Work Session Document (page 25) presented by E. Echols)

The Nature Conservancy Contradicts Biodiversity Dogma

P. Karieva Chief Scientist and Director *Breakthrough Journal* Summer 2011

- “As conservation became a global enterprise in the 1970s and 1980s, the movement's justification for saving nature shifted from spiritual and aesthetic values to focus on biodiversity. Nature was described as primeval, fragile, and at risk of collapse from too much human use and abuse.
- But ecologists and conservationists have grossly overstated the fragility of nature, frequently arguing that once an ecosystem is altered, it is gone forever.
- Conservation’s binaries-growth *or* nature, prosperity *or* biodiversity – have marginalized it...”

Continued: *Nature Conservancy*

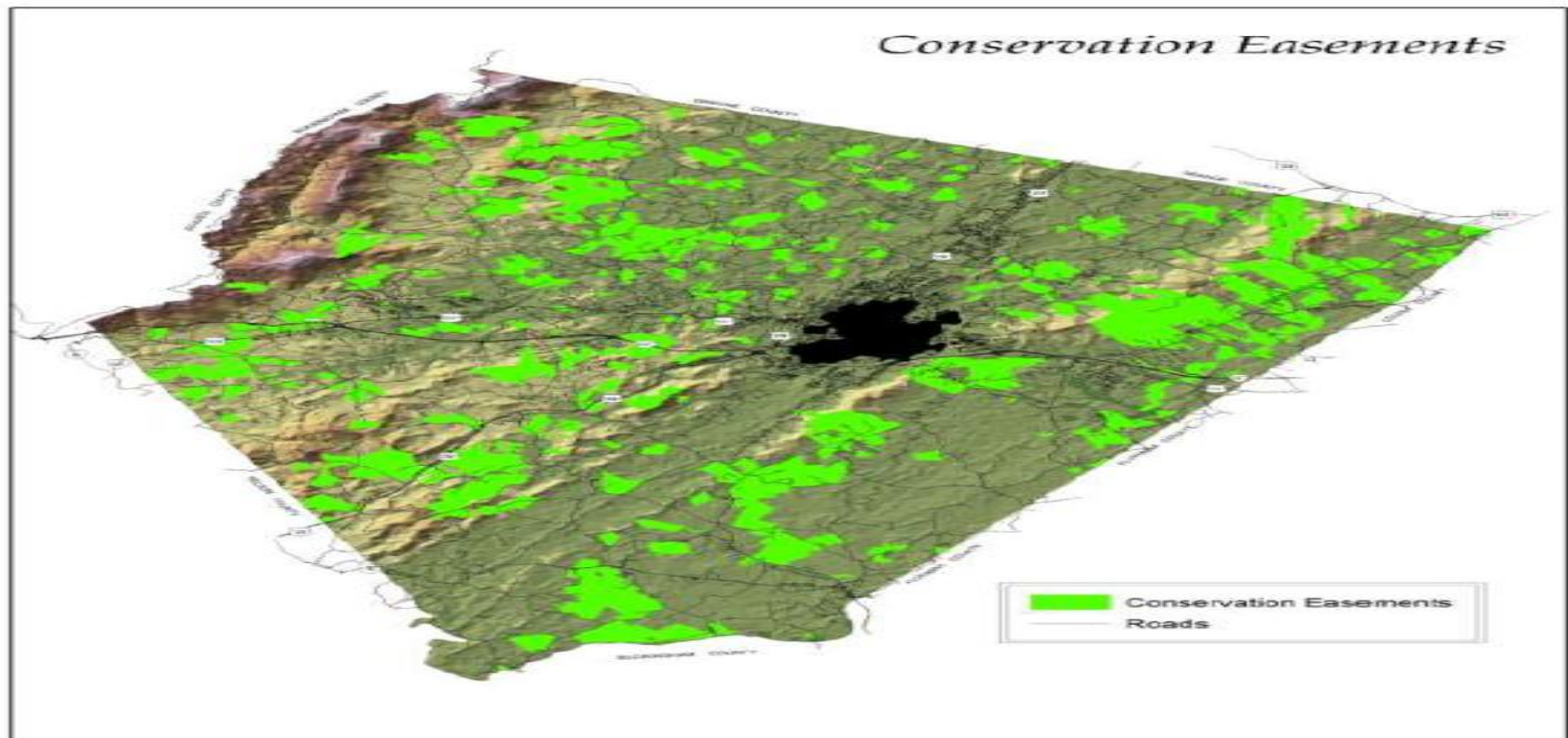
“...the concept of Nature, as opposed to the physical and chemical workings of natural systems, has always been a human construction... The notion that nature without people is more valuable than nature with people and the portrayal of nature as fragile or feminine reflect not timeless truths, but mental schema that change to fit the time.”

“The trouble for conservation is that the data simply do not support the idea of a fragile nature at risk of collapse. Ecologists now know that the disappearance of one species does not necessarily lead to the extinction of any others, much less all others in the same ecosystem. In many circumstances, the demise of formerly abundant species can be inconsequential to ecosystem function.” (P. Kareiva)

Albemarle County Biodiversity Panic, Why?

- Current estimates of the number of species varies from “two million species to over 30 or even 100 million species,” says Dr Braulio Dias, executive secretary of the Convention on Biological Diversity. *“So we don't have a good estimate to an order of magnitude of precision.”*
- The International Union for Conservation of Nature (IUCN) lists 801 animal and plant species known to have gone extinct since 1500. Of 191 bird and mammal species 95 percent were on islands, where humans, and human-introduced predators and diseases brought about their destruction.
- According to IUCN data, only one animal has been definitely identified as having gone extinct since 2000. It was a mollusk.
- No one knows the non-human influenced “background rate of extinction”

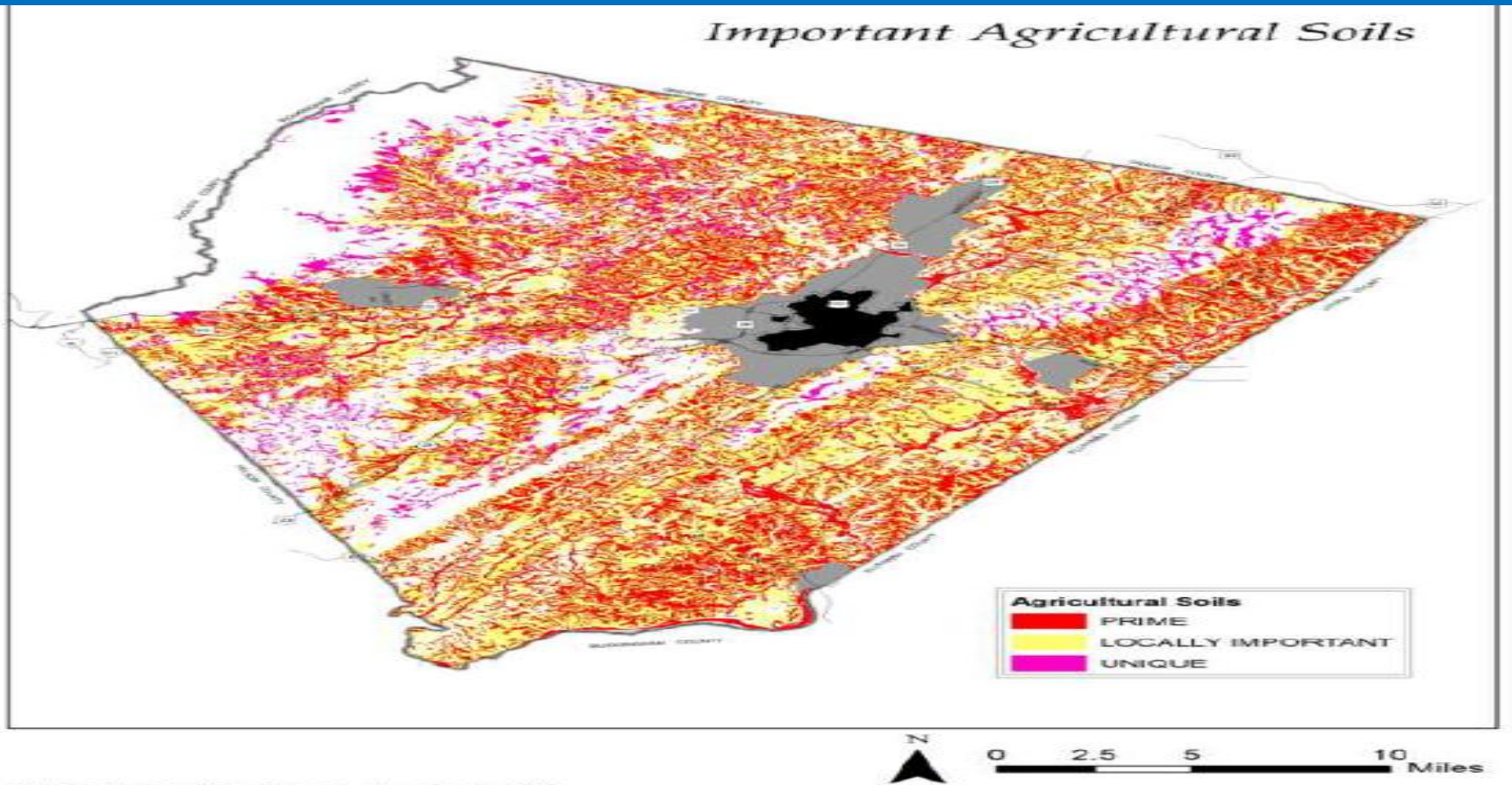
“County Conservation Easements”: Making Developable Land More Expensive And Property Taxes Higher For Others Wishing To Use Their Land



Map by Scott Clark, Alabama County Community Development Dept., August 2012.
Conservation easement data accurate as of October, 2012. Please
note that some parcels shown as being under easement may not
have their entire area under easement (usually in the case of riparian easements).

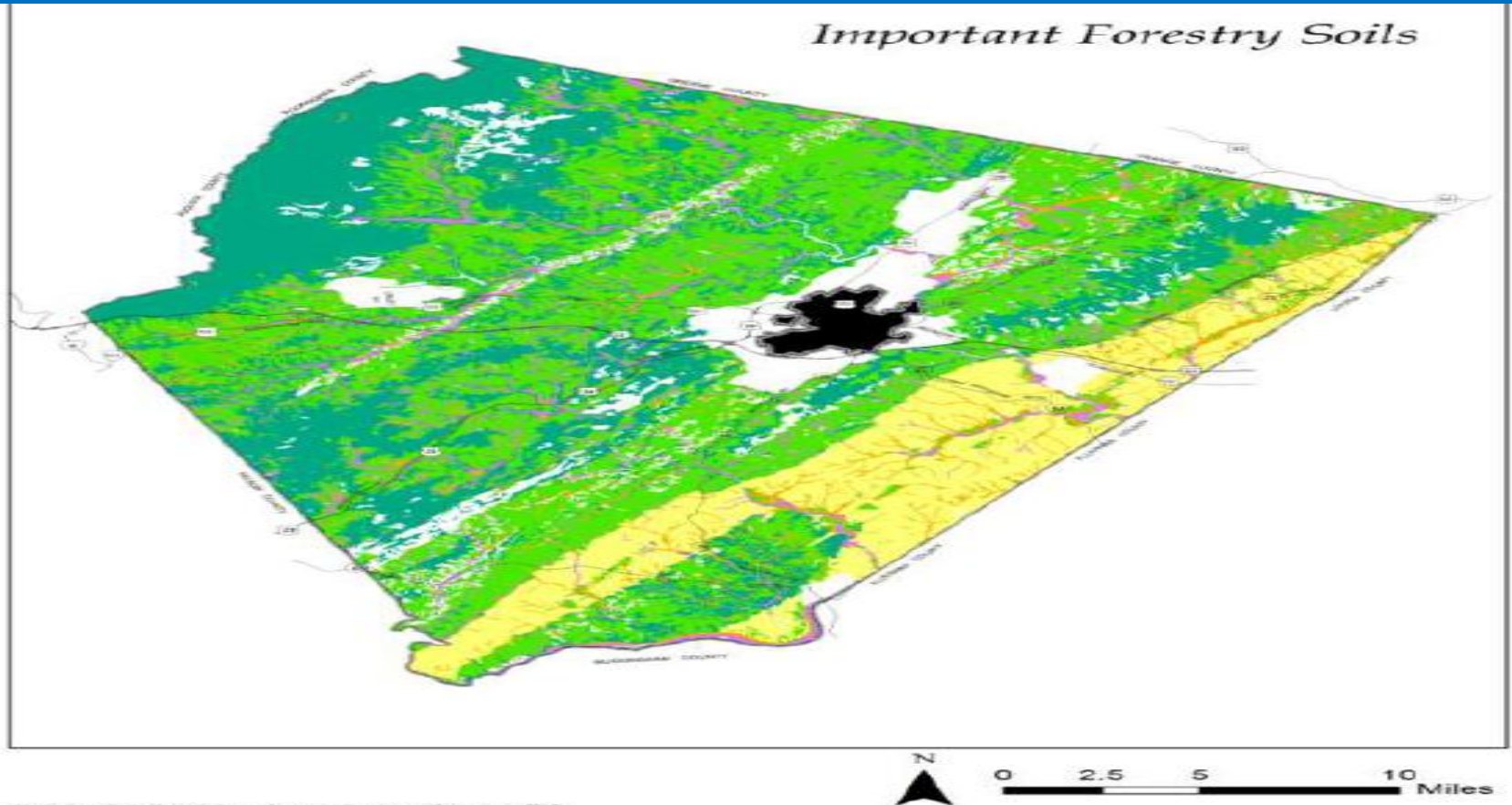
PLANNING COMMISSION WORKSESSION
OCTOBER 30, 2012

“Important Agricultural Soils”: Will They Next Be Rationed And Regulated?



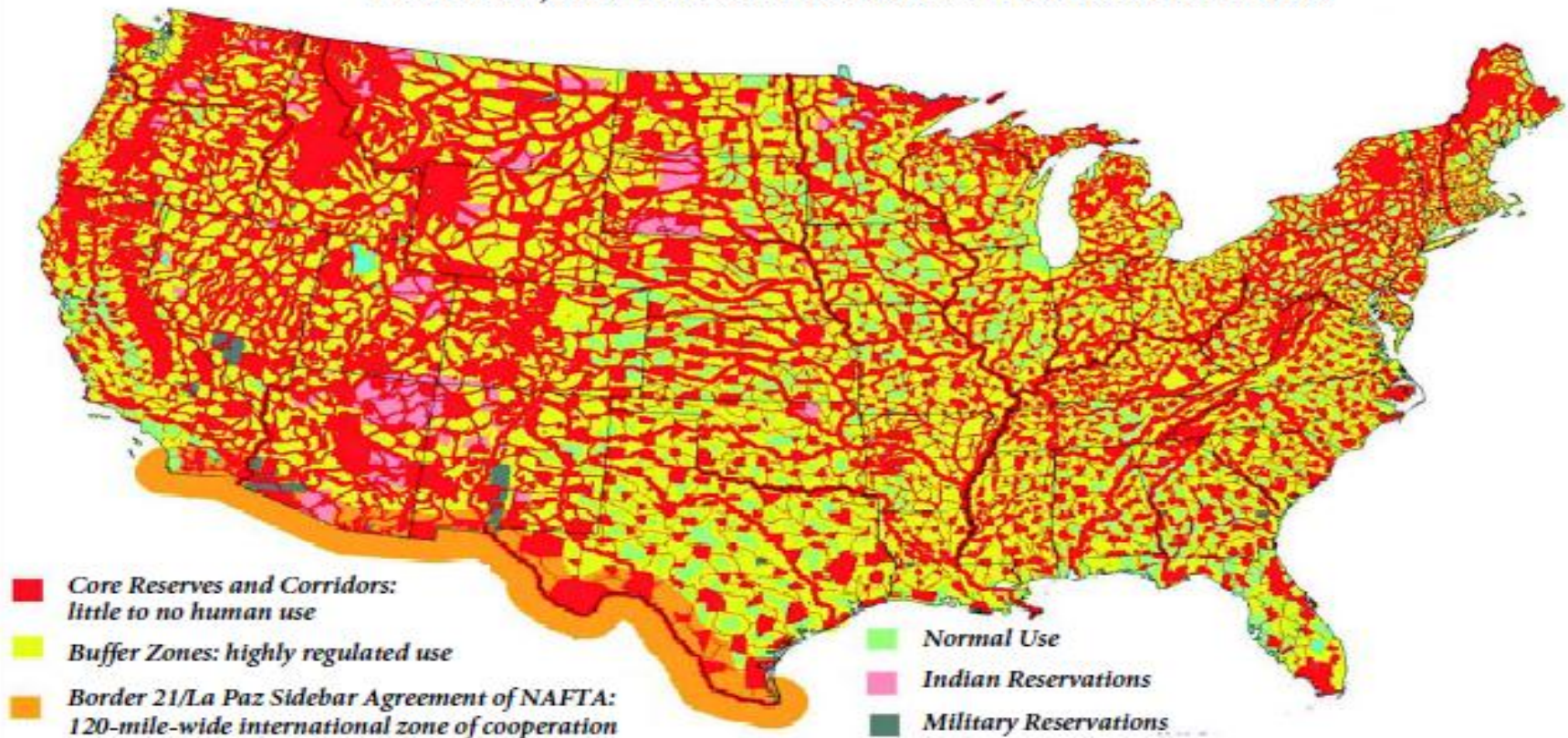
PLANNING COMMISSION WORKSESSION
OCTOBER 30, 2012

“Important Forestry Soils”: More County Regulations For Private Use?



United Nations 1992“Convention on Biological Diversity” Meets “The Wildlands Project” (Tabled by US Senate in 1994 because of this map)

**SIMULATED RESERVE AND CORRIDOR SYSTEM TO PROTECT BIODIVERSITY
AS MANDATED BY THE CONVENTION ON BIOLOGICAL DIVERSITY,
THE WILDLANDS PROJECT, UNITED NATIONS AND U.S. MAN AND THE BIOSPHERE
PROGRAM, AND VARIOUS U.N. AND U.S. HERITAGE PROGRAMS**



Taken from: The United Nations Convention on Biological Diversity, Article 8a-e; United Nations Global Biodiversity Assessment, Section 13.3.2.2.3; US Man and the Biosphere Strategic Plan, UN/US Heritage Corridor Program, "The Wildlands Project," WildEarth, 1992.

Why Do County Planners Propose New Biodiversity Study? Duplicate DCR Data? Identify, Regulate, And Tax?

COMMONWEALTH of VIRGINIA

The Natural Communities of Virginia: Ecological Groups and Community Types



A Question For The County Planning Staff And BOS

American Planning Association: smart growth and population compaction do not achieve claimed goals, but do achieve negative impacts

Nature Conservancy: The trouble for conservation is that the data simply do not support the idea of a fragile nature at risk of collapse.

When the facts change, I change my mind. What do you do, sir?" John Maynard Keynes

What does the planning staff do?