

Good News

VS.

Bad News (Bears)

Skepticism is the first step to Truth – D. Diderot

Albemarle County BOS

May 2, 2012

presentation

by

Charles Battig, MD

VA-Scientists and Engineers for Energy and
Environment

Dr. James Lovelock: “We were supposed to be halfway toward a frying world now”

- **Flashback 2007:**
Lovelock Predicts Global Warming Doom:
‘Billions of us will die; few breeding pairs of people that survive will be in Arctic’
- **MSNBC April 23, 2012:**
‘Gaia’ scientist James Lovelock reverses himself: I was ‘alarmist’ about climate change & so was Gore! **‘The problem is we don’t know what the climate is doing. We thought we knew 20 years ago’**

“Identification Of An Effect On One Population Out Of 20 Is Not Sufficient To Declare A Species Headed For Extinction” April 2006

Review of CBD Petition—M.K. Taylor

4

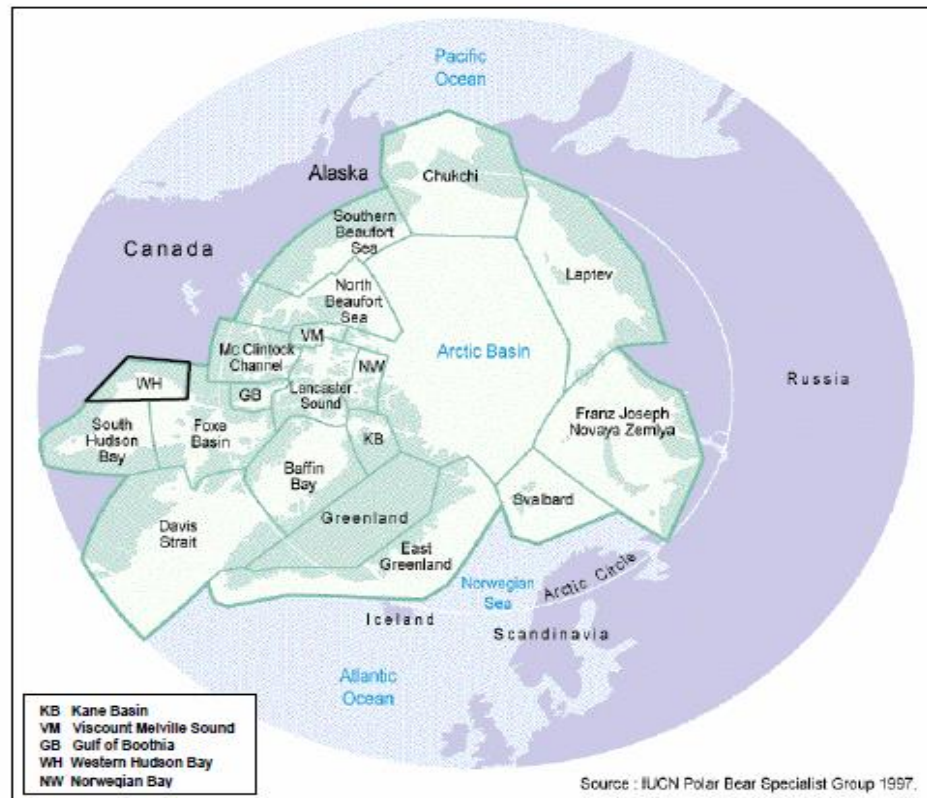


Fig. 1. Circumpolar distribution of polar bear populations. The Western Hudson Bay population (WH), for which data on negative impacts of climate change exist, is highlighted. Polar bears of WH comprise approximately 4% of the world total population polar bears.

Dr. Mitchell K. Taylor
Manager, Wildlife
Research
Department of
Environment
Government of
Nunavut
P.O. Box 209
Igloolik, NU X0A 0L0,
Canada

The Globe and Mail (Canada) April 4, 2012

“Healthy polar bear count confounds doomsayers”



“the bear population is not in crisis as people believed,” said Drikus Gissing, Nunavut’s director of wildlife management. “There is no doom and gloom.”

...media in southern Canada has led people to believe polar bears are endangered. “They are not.” He added that there are about 15,000 polar bears across Canada’s Arctic. “That’s likely the highest [population level] there has ever been.”

“ There are about 25,000 polar bears in the north circumpolar region, of which about 15,000 are in the Canadian High Arctic.”

2009 Prediction Of Doom vs. 2012 Joyful Reality

2009: Penguin Devastation

**SCIENCE
NATION**
The Online Magazine That's All About Science for the People

[About Science Nation](#)
[Get eMail Updates](#)
[Contact Us](#)
[More Special Reports](#)
[Science360 News](#)
[NSF Home](#)

SCIENCE NATION TOPICS
[Archive](#)
[Breakthrough in Early Cancer Detection](#)
[Bionic Leg](#)
[Skin Mounted Electronics](#)
[Engineering Safer Drinking Water in Africa](#)
[How Does Your Garden Grow](#)
[Nosing Out Mosquitoes](#)
[Developing Robots That Can Teach Humans](#)

July 13, 2009

Climate Change Likely to Devastate Emperor Penguin Populations in Antarctica

Survival of species could be threatened

You might call them the "poster children" of Antarctica. Penguins have long topped the charts as the iconic animal of the frozen continent.

But now, a new study indicates melting sea ice, caused by climate change, may soon wreak havoc on one colony of emperor penguins--and that could spell doom for a large swath of the entire species.

"We show that if the sea ice shrinks, as projected by climate models, the population will decrease--we show a dramatic decrease--by the end of the century," said population ecologist Stephanie Jenouvrier. "The population will decline from about 3,000 breeding pairs to date to 400 breeding pairs by the end of the century."

Jenouvrier has been to Antarctica twice to study penguins around the French research station in Terre Adelie. One colony of emperor penguins in that area is perhaps the best documented on the continent. French scientists have been monitoring the colony since the 1960s.

DOWNLOADS
[Download video - full](#)
[Download video - short](#)

RELATED MULTIMEDIA

[Enlarge image](#)

Curious emperor penguins approach the field camp, known as Penguin Ranch, at Cape Washington, Antarctica. With NSF support, Antarctic veteran Dr. Paul Ponganis has spent many field seasons observing the habits of emperor penguins. Read more in the [NSF discovery](#). Credit: Scripps Institution of Oceanography/UC San Diego



2012: Twice the Penguins

ScienceDaily®
Your source for the latest research news

Key clinical information and patient for MANTLE CELL LYMPHOMA are a

News	Articles	Videos	Images	Books
Health & Medicine	Mind & Brain	Plants & Animals	Earth & Climate	Space & Time
Matter & Energy				

Science News *... from universities, journals, and other research organizations*

Twice as Many Emperor Penguins as Thought in Antarctica, First-Ever Penguin Count from Space Shows

ScienceDaily (Apr. 13, 2012) — A new study using satellite mapping technology reveals there are twice as many emperor penguins in Antarctica than previously thought. The results provide an important benchmark for monitoring the impact of environmental change on the population of this iconic bird, which breeds in remote areas that are very difficult to study because they often are inaccessible with temperatures as low as -58 degrees Fahrenheit.

Recently reporting in the journal *PLoS ONE*, an international team of scientists describe how they used Very High Resolution satellite images to estimate the number of



On the ice, emperor penguins with their black and white plumage stand out against the snow and colonies are clearly visible on satellite imagery. (Credit: Paul Ponganis, National Science Foundation)

Adapted by Google

See Also:
Plants & Animals
• [Nature](#)

“Twice as Many Emperor Penguins as Thought in Antarctica,” *

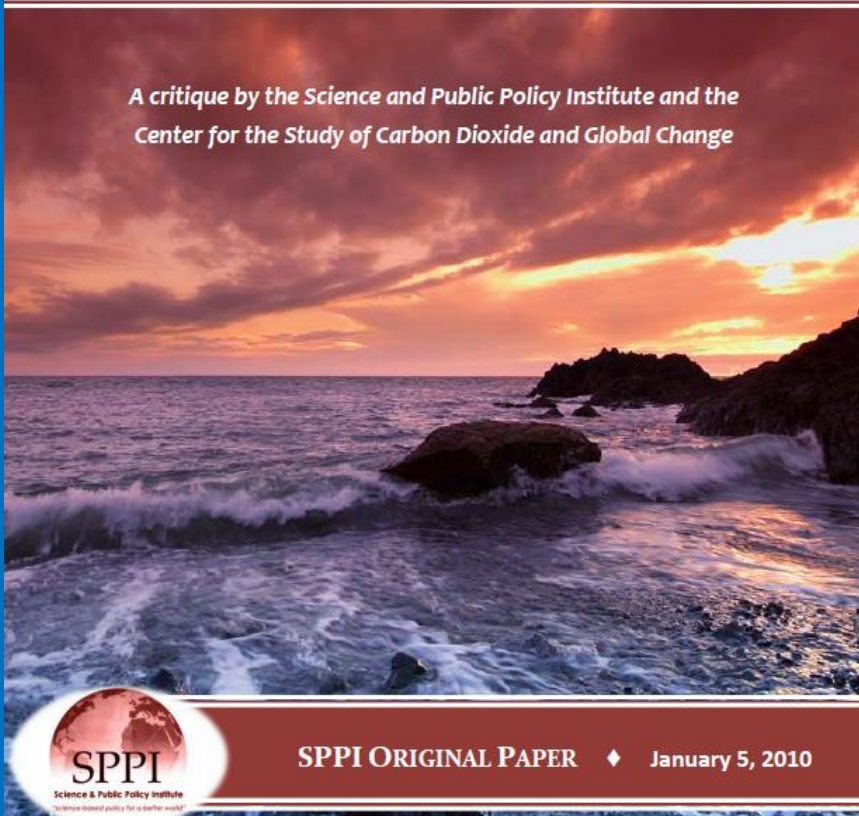


*Science Daily April 13, 2012

Scientific Facts In 150 Studies Vs. 2009 Sigourney Weaver Film “Acid Test”

“ACID TEST: THE GLOBAL CHALLENGE OF OCEAN ACIDIFICATION” – A NEW PROPAGANDA FILM BY THE NATIONAL RESOURCES DEFENSE COUNCIL FAILS THE ACID TEST OF REAL WORLD DATA

A critique by the Science and Public Policy Institute and the Center for the Study of Carbon Dioxide and Global Change



SPPI ORIGINAL PAPER ♦ January 5, 2010

- Ocean pH is *alkaline* 7.9-8.2 (7.0 neutral)
- A decrease of 0.1 pH unit is still an *alkaline* ocean
- “far too many predictions of CO₂-induced catastrophes are looked upon as sure-to-occur, when real-world observations show such doomsday scenarios to be highly unlikely or even virtual impossibilities. The phenomenon of CO₂-induced ocean acidification is no different. Rising atmospheric CO₂ concentrations are not the *bane of the biosphere*; they are an *invaluable boon to the planet’s many life forms.*”

Our Tree Environment Is Flourishing

- Forests in the eastern United States appear to be growing faster than they have in 225 years in response to rising levels of carbon dioxide in the atmosphere...
- On average, the stands were expanding at a rate of two extra tons of mass per acre per year, by the end of the study — the equivalent of a single two-foot-diameter tree...”

Sean M. McMahon, Geoffrey G. Parker, Dawn R. Miller Smithsonian Environmental Research Center, Forest Ecology Group, Edgewater, MD 21307-0028; Center for Tropical Forest Science, Smithsonian Tropical Research Institute Feb. 2010

More Good News

HOW FLOWERS RESPOND TO RISING ATMOSPHERIC CO₂

At higher CO₂ levels, plants generally produce more and larger flowers.



SPPI & CO₂SCIENCE ORIGINAL PAPER ♦ April 25, 2012

Peter Kareiva (chief scientist and vice president) *Nature Conservancy* writes

Conservation in the Anthropocene: (*Breakthrough Journal* No.2, Fall 2011)

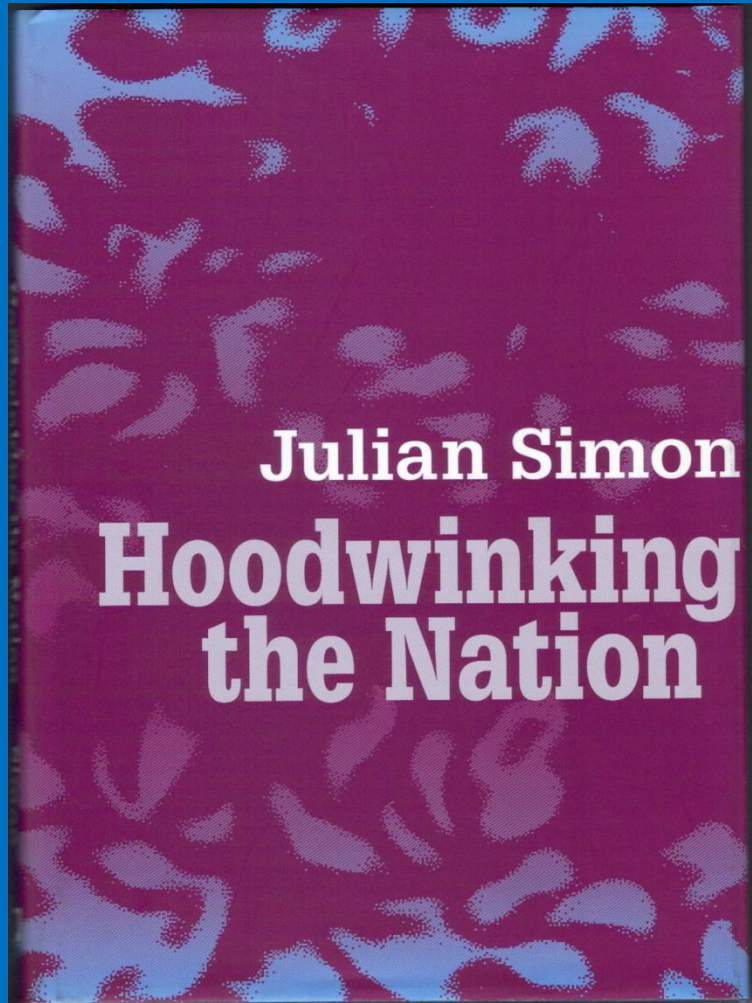
“Kaveira argues that environmentalists are living in the past, and are effectively lying to their constituents about the state of nature, producing a doom-and-gloom view to sustain their relevance, at the expense of any sort of real progress”

“We love the horror story,” Kareiva said “We just love it. The environmental movement has loved it. That, I think, is ... [a] strategy failure. **And it’s actually not supported by science.**”*

* *Resourceful Earth*: Brian McGraw review April 23, 2012

True In 1999

Still True Today



- “False bad news” ...
- The vanishing farmland scam
- Scares about resources
- Scares about population growth
- Scares about the environment
- **Scared biologists**

True Way Back Then Still True Today

“The whole aim of practical politics is to keep the populace alarmed (and hence clamorous to be led to safety) by menacing it with an endless series of hobgoblins, all of them imaginary.” H. L. Menken
US editor (1880 - 1956)

The same might be said of a large portion of climate research which is based on computer generated suppositions which feed upon public and political gullibility