

Back To *Climate* Basics

Skepticism is the first step to Truth – D. Diderot

Albemarle County BOS

March 7, 2012

presentation

by

Charles Battig, MD

VA-Scientists and Engineers for Energy and
Environment

Update: *ICLEI* “Drop Outs” Growing

- Spartanburg, SC
- Georgetown, TX
- Carver, MA
- Montgomery County, PA
- Edmond, OK
- Carroll County, MD
- Norman, OK
- Monmouth County, NJ
- Somerset County, NJ
- Las Cruces, NM
- Garland ,TX
- College Station, TX
- James City County, VA
- Amador County, CA
- Temecula, CA
- Vista, CA
- Pinellas, FL
- Oklahoma City, OK
- Albemarle County, VA
- Lexington, VA
- Abingdon, VA
- Plantation, FL
- Sarasota County, FL

UVA February 8, 2012 BOS

Presentation Take-Aways

- The UN's IPCC is the UVA climate-reference authority; if the IPCC says it is 90% certain , UVA accepts it as true
- Computers serve useful functions in other fields; therefore they must be useful in climate analysis; yes , but are they valid? *Computer models are not truth machines.*
- The effects of the sun on climate were considered but deemed not of consequence; manmade CO2 is the only explanation that fits

The UVA Claims Of “Climate Consensus” Contradicted By U.N. IPCC Climate Official

“We're not scientifically there yet. Despite what you may have heard in the media, there is nothing like a consensus of scientific opinion that this is a problem. Because there is natural variability in the weather, you cannot statistically know for another 150 years.” --

UN IPCC's Tom Tripp, a member of the UN IPCC since 2004 and listed as one of the lead authors

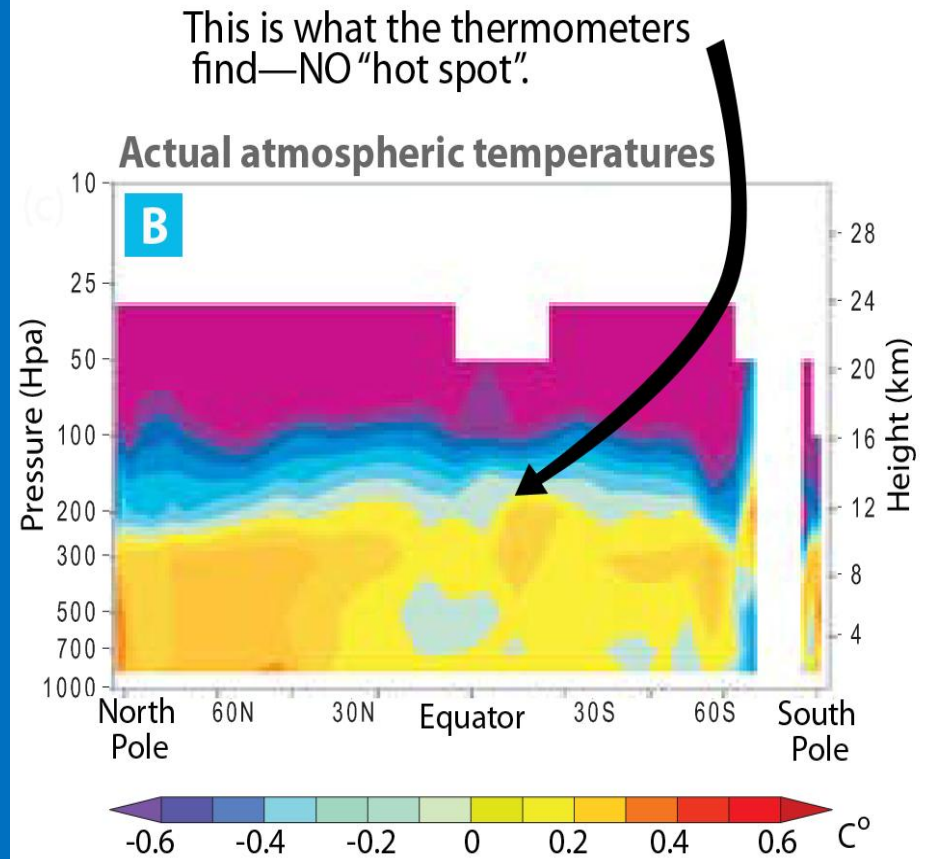
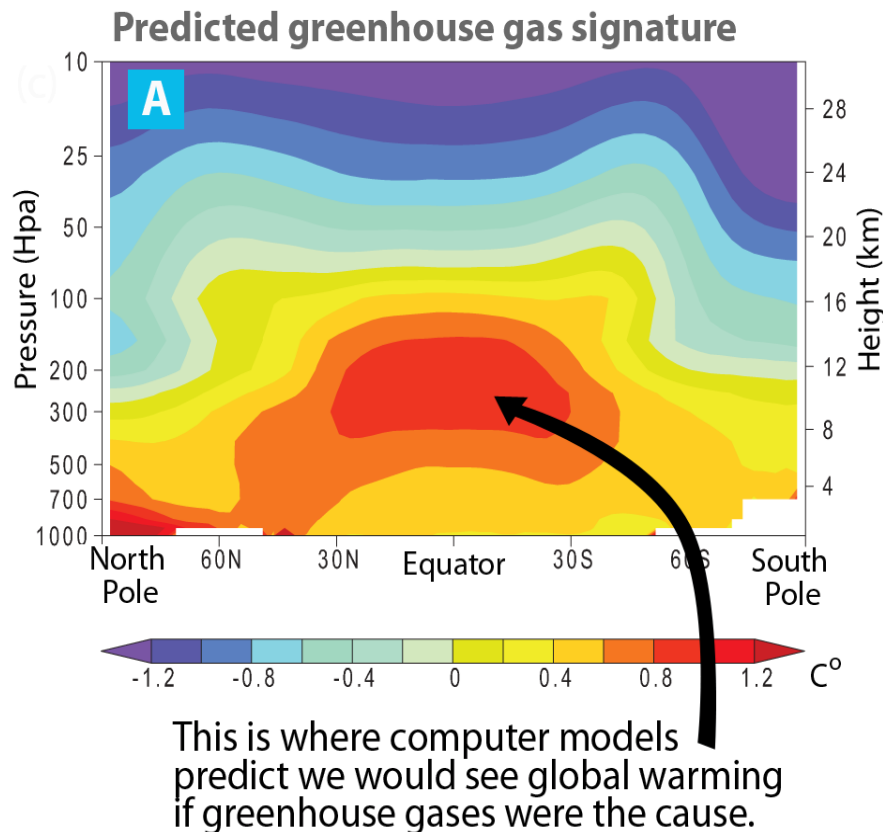
The Computer-World Mentality

"The data doesn't matter. We're not basing our recommendations on the data. We're basing them on the climate models." -Prof. Chris Folland, Hadley Centre for Climate Prediction and Research

The *Missing* Greenhouse Gas “Hot Spot”

All The IPCC Computer Models Predict It;

Real World Measurements Do Not Find It



U.N. IPCC Experts vs. Reality...

IPCC Models Refuted By Real-World Observations Four Times In A Row

Reality Versus Alarm

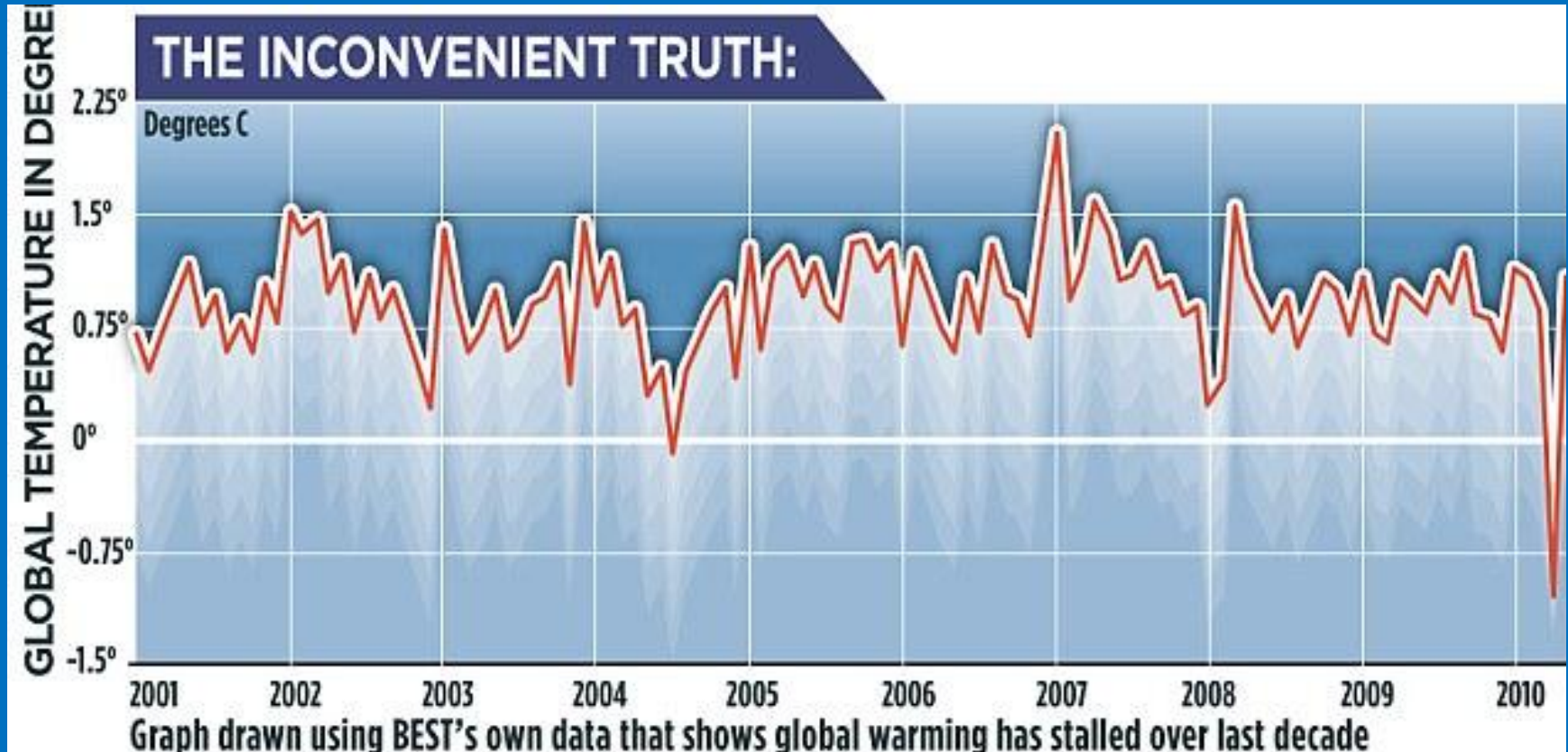
Surface global temperature shift, in degrees Celsius, vs IPCC projections, 1989-2011



Source: HadCRUT3

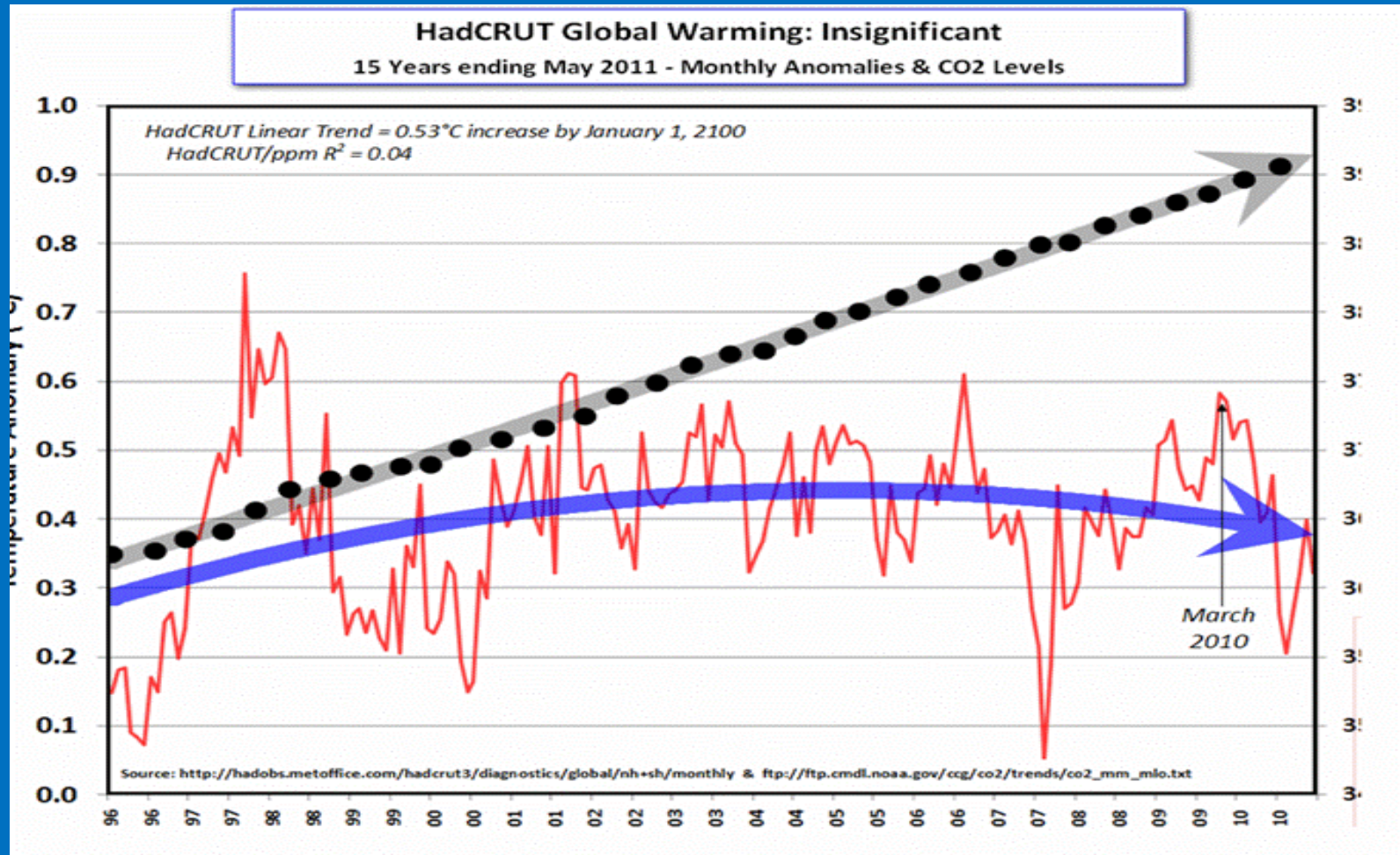
2011 “*BEST*” Study Confirms Lack Of Global Warming As CO2 Rises; Land Data Only

“the human component of global warming may be somewhat overestimated”

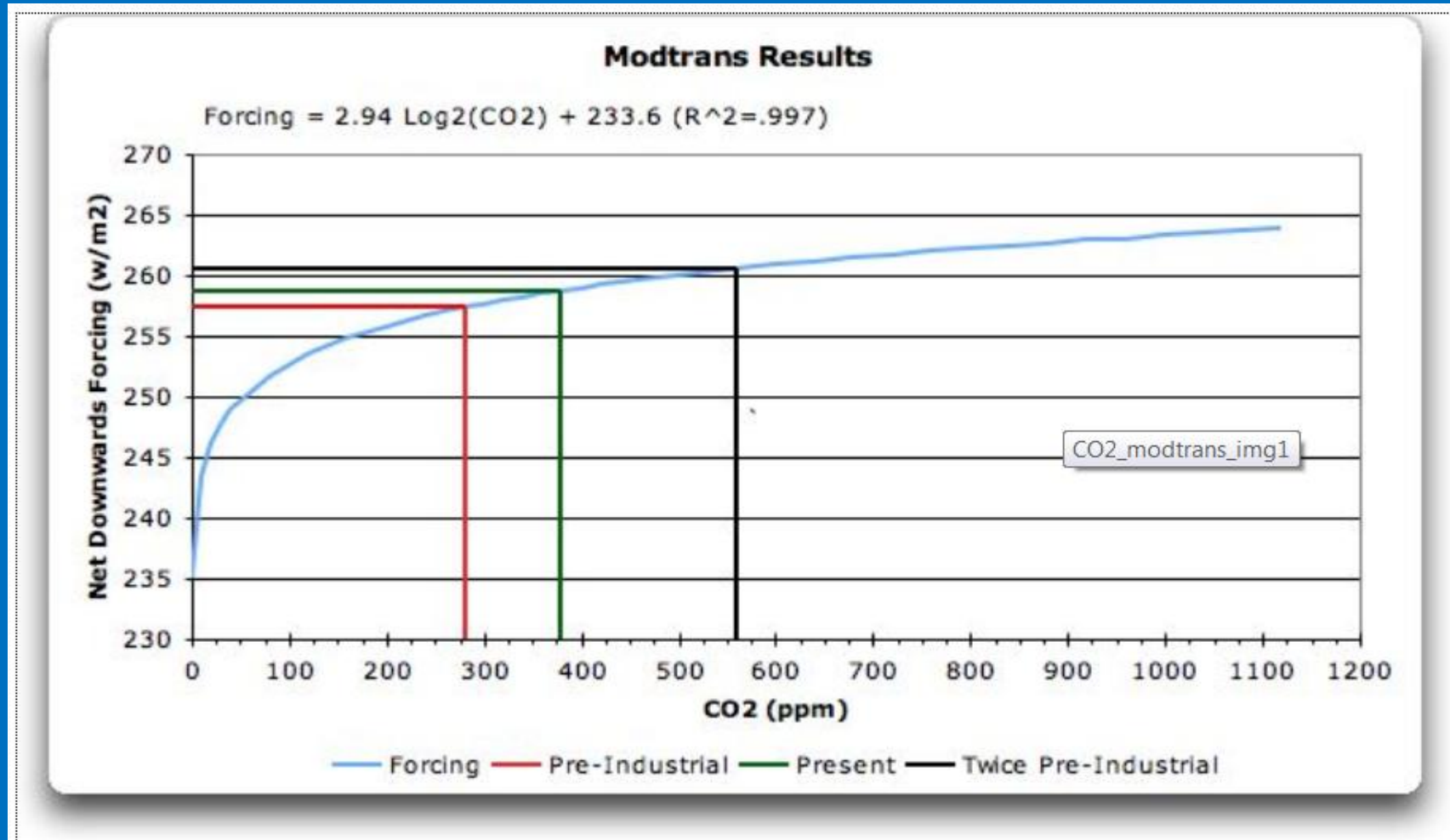


CO2 Up, Global Temperatures Down For Ten years

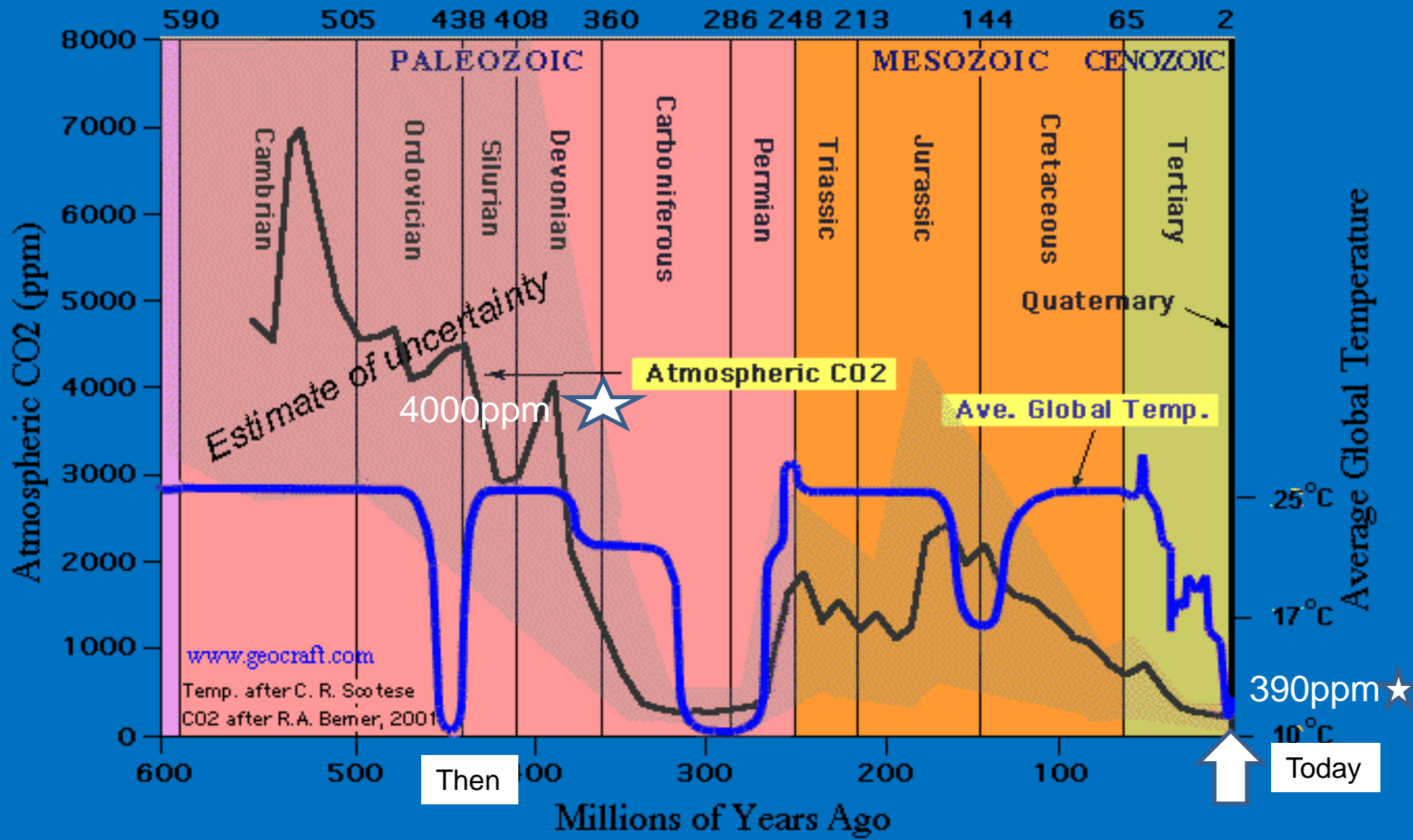
Unlike IPCC Models, Facts Show Temperature *Falling* While CO2 *Rises*



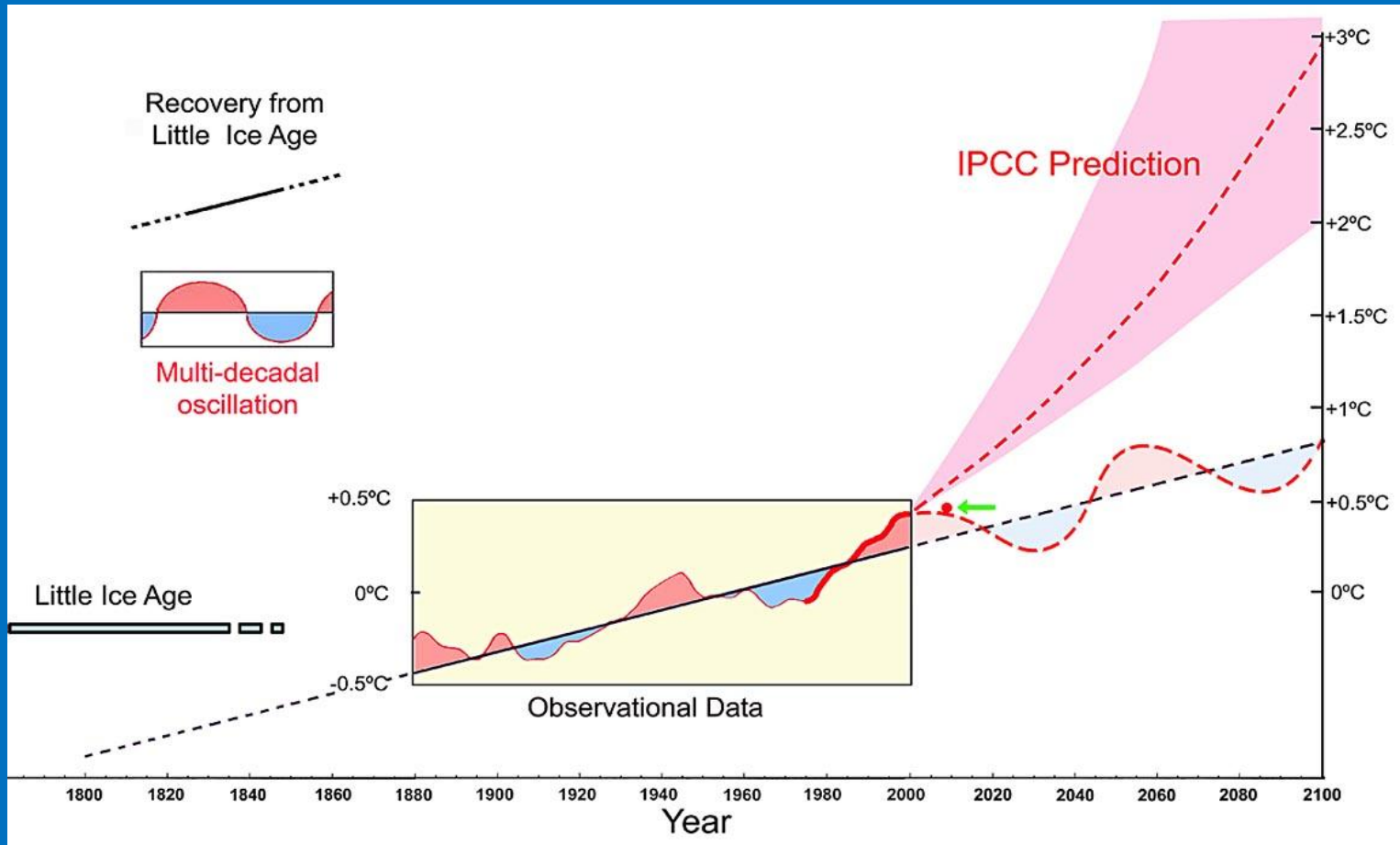
Adding More CO2 Has A Lesser And Lesser Impact On Global Warming



UVA: Why Quote CO2 Levels Back To Only 700,000 Years? It Has Been Much Higher



Global Temperatures, Past, Present & *Future* ? It All Depends Upon Your Chosen Starting Point And Time Period...Global Warming Is Nothing New



Graph: Dr. Syun Akasofu-The Third Heartland Climate Conference, NYC, 2009

IPCC Assessment Report (AR5) 2012 Expert Reviewer On *Solar* Influence*

“The empirical evidence in favor of the **solar explanation is overwhelming**. Dozens of peer-reviewed studies have found a very high degree of correlation (.5 to .8) between solar-magnetic activity and global temperature going back many thousands of years (Bond [2001](#), Neff [2001](#), Shaviv [2003](#), Usoskin [2005](#), and many others listed below). In other words, solar activity “explains,” in the statistical sense, 50 to 80% of past temperature change.”

* Alec Rawls

More Solar Influence

Geophysical Research Letters (February 29, 2012) examines climate proxies over the past 6800 years and finds that the hydroclimate (droughts & floods) of the Northeastern U.S. is "highly sensitive" to solar activity ("solar forcing").

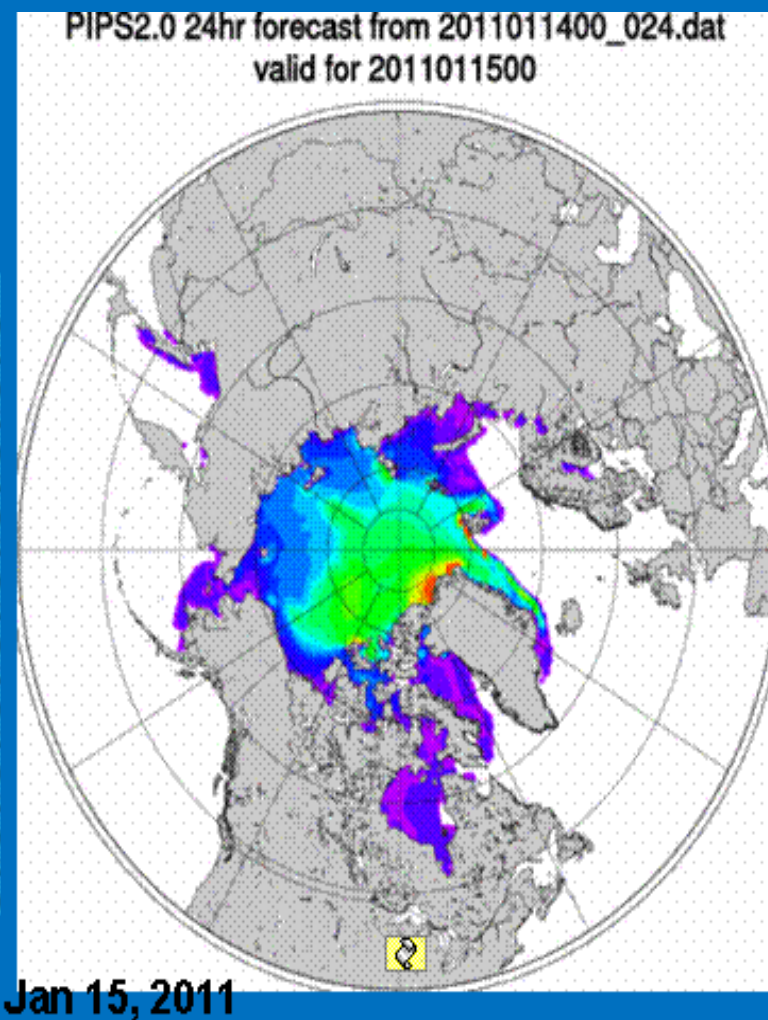
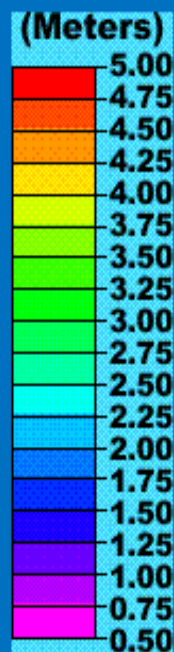
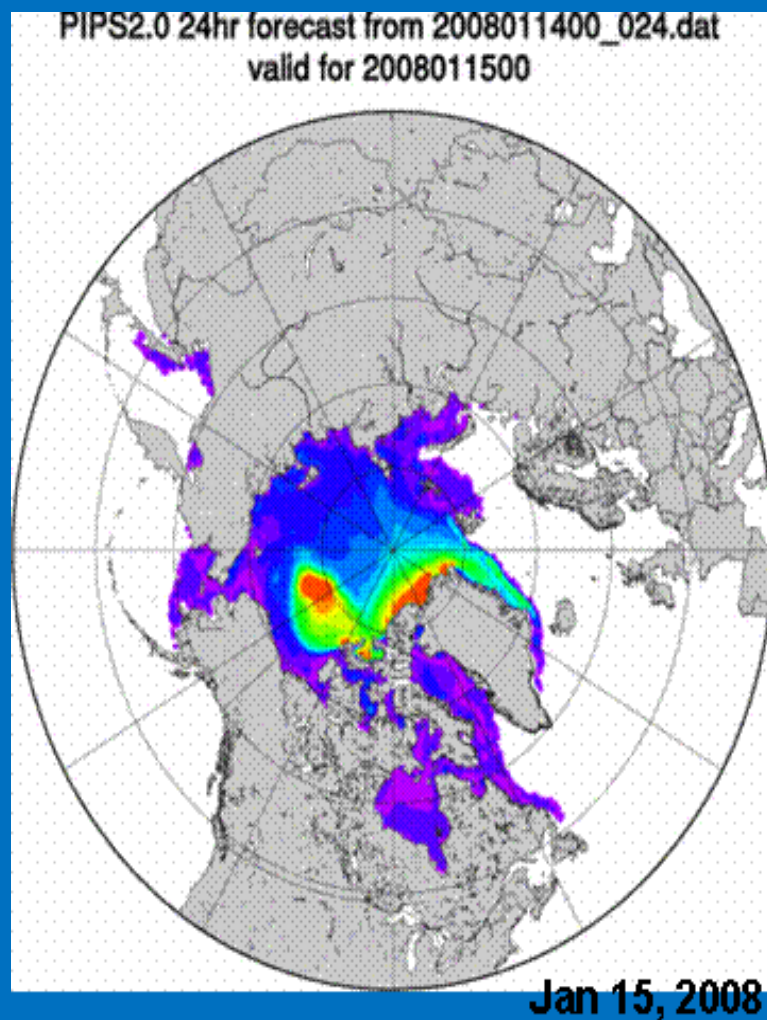
"The Sun may be entering a weak phase, analogous to the Maunder minimum, which could lead to more frequent flooding in the northeastern US at this multidecadal timescale."

ABCs Of Solar Influence on Climate

The 2012 View

Supernova remnants → cosmic rays → solar modulation of cosmic rays → variations in cluster and sulphuric acid production → variation in cloud condensation nuclei → variation in low cloud formation → variation in climate.

Arctic Ice = Extent And Thickness



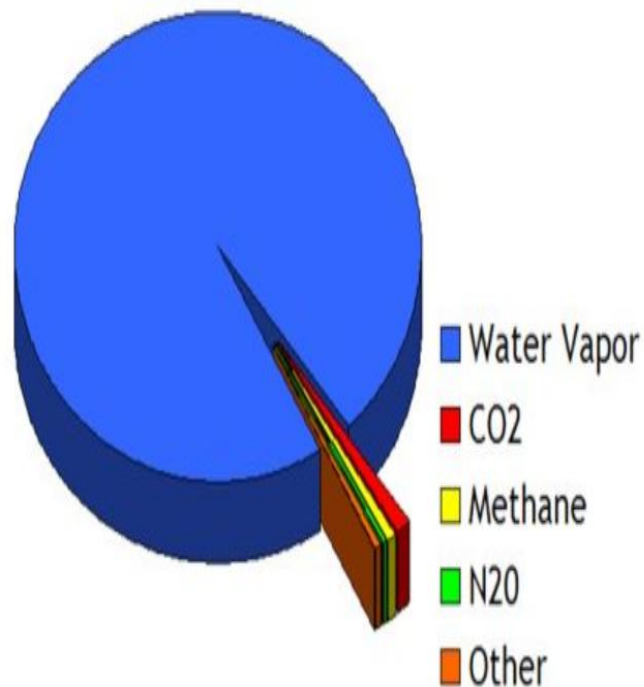
Manmade CO2 Contributes +/- 0.2% Of The Total GHG Effect

Water = 95% of the GHG Effect

All CO2 Contributes 5%

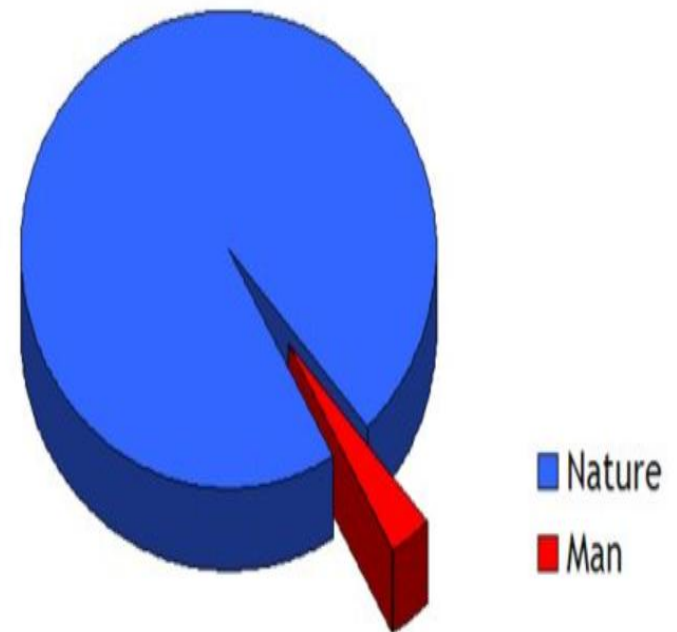
Mankind Contributes Just 4% Of The Global CO2

Greenhouse Gases In The Atmosphere



<http://woody.typepad.com>

Atmospheric CO2 Sources



<http://woody.typepad.com>

“Who Are You Going To Believe – The Government Climate Scientists Or The Data?”

*by Dr. David Evans **

WHAT THE GOVERNMENT CLIMATE SCIENTISTS SAY

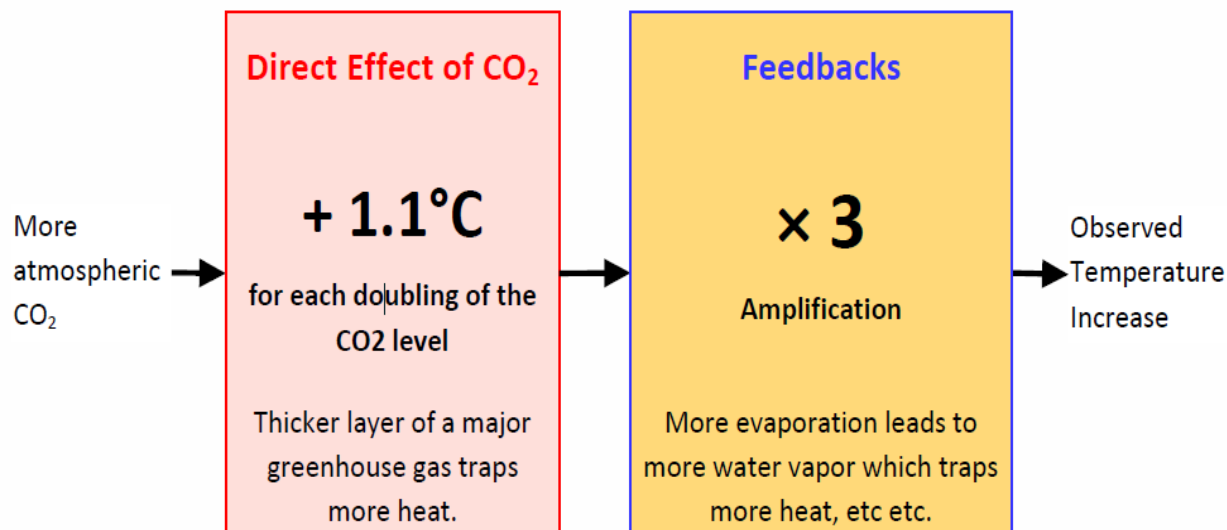


Figure 1: The climate models. If the CO₂ level doubles (as it is on course to do by about 2070 to 2100), the climate models estimate the temperature increase due to that extra CO₂ will be about $1.1^{\circ}\text{C} \times 3 = 3.3^{\circ}\text{C}$.¹

“Who Are You Going To Believe – The Government Climate Scientists Or The Data?”

*by Dr. David Evans **

The government climate scientists and the media often tell us about the direct effect of the CO₂, but rarely admit that two thirds of their projected temperature increases are due to amplification by feedbacks.

WHAT THE SKEPTICS SAY

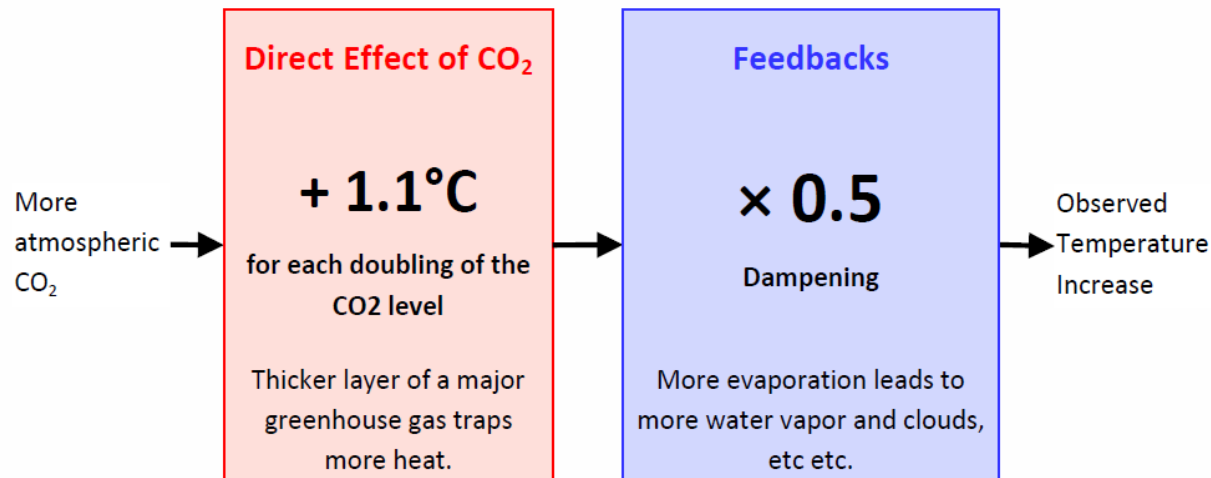







Figure 2: The skeptic's view. If the CO₂ level doubles, skeptics estimates that the temperature increase due to that extra CO₂ will be about $1.1^{\circ}\text{C} \times 0.5 \approx 0.6^{\circ}\text{C}$.⁴

“Don’t Sweat The Small Stuff”

Nature Pays No Attention To Your Carbon Footprint

Icelandic volcanic eruption intensified

English.news.cn 2010-04-16 09:25:51

 Feedback |  Print |  RSS |  



LCAPP...An Un-elected, Special Interest Group

Some Members Funded By Local Alton Jones Oil Money Via *Blue Moon* and *Oak Hill Funds*

STEERING COMMITTEE FOR LOCAL CLIMATE ACTION PLANNING PROCESS (LCAPP)

- Cynthia Adams, Local Energy Alliance Program (LEAP)
- David Brown, Charlottesville City Council
- John Cruickshank, Sierra Club, Piedmont Group
- Bill Edgerton, The Oak Hill Fund; formerly with the County of Albemarle Planning Commission
- Tom Frederick, Rivanna Water and Sewer and Solid Waste Authorities
- Bill Greenleaf, Richmond Regional Energy Alliance; formerly with William McDonough + Partners
- Tim Hulbert, Charlottesville Regional Chamber of Commerce
- Buck Kline, Virginia Department of Forestry
- Chris Lee, Piedmont Virginia Companies, Inc.
- Ann Mallek, County of Albemarle Board of Supervisors
- David Neuman, University of Virginia, Office of the Architect
- Mike Osteen, City of Charlottesville Planning Commission
- Hank Shugart, University of Virginia, Department of Environmental Sciences
- Jay Willer, formerly with Blue Ridge Home Builders Association

Ex Officio Members

Susan Elliott (County of Albemarle)
Andrew Greene (University of Virginia)
Andy Lowe (County of Albemarle)
Nancy Quirk (City of Charlottesville)
Kristel Riddervold (City of Charlottesville)
Sarah Temple (formerly with County of Albemarle)

City of Charlottesville Emissions Baseline Report (2008)

<http://www.agreencity.org>
<http://www.charlottesville.org/Index.aspx?page=2142>

County of Albemarle Baseline Emissions Report (2009; 2011 revision)

<http://www.albemarle.org/departments.asp?department=envmgt&relpage=3018>

Sustainability at the University of Virginia

<http://www.virginia.edu/sustainability/>